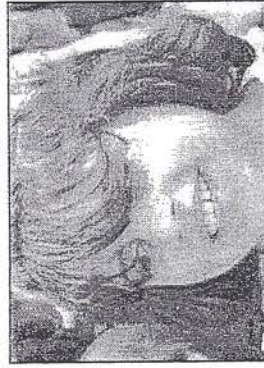


# Family-School-Community Partnerships



<u>Standard</u>	<u>Page</u>
P1 Parenting	31
P2 Communication	32
P3 Volunteering	33
P4 Learning at Home	34
P5 Decision Making	35
P6 Collaborating with the Community	36

Kindergarten programs that foster home-school-community connections assure students' school success. Partnerships that create seamless experiences support Kindergarten's learning. The link is established when parents and school staff share information about the child, family, home and school culture.

# WORKING DRAFT

## FAMILY-SCHOOL-COMMUNITY PARTNERSHIPS

### 1. Parenting

Quality kindergarten programs will support families with parenting and child rearing skills.

<p><b>School</b></p> <p><i>To support children, families, and communities the school will:</i></p>	<p><b>Family</b></p> <p><i>To support children the family can:</i></p>	<p><b>Community</b></p> <p><i>To support children, families, and schools the community can:</i></p>
<p>A. Assist families with parenting and child rearing skills (housing, health, nutrition, clothing, &amp; safety).</p>	<ul style="list-style-type: none"> <li>▪ Exhibit interest in increasing knowledge and skills in parenting and child rearing.</li> <li>▪ Acquire knowledge of child development.</li> <li>▪ Establish home conditions that support children as kindergarten learners.</li> <li>▪ Provide information and participate in activities to help schools understand the diversities that exist among children and families.</li> </ul>	<ul style="list-style-type: none"> <li>▪ Provide a variety of parenting and child rearing resources to families.</li> <li>▪ Provide a variety of resources concerning child development.</li> <li>▪ Provide a variety of resources concerning the establishment of home conditions that support children as kindergarten learners.</li> <li>▪ Offer resources that help schools understand the diversities that exist among children and families.</li> </ul>
<p>B. Assist families in understanding child development.</p>		
<p>C. Assist families in setting home conditions that support children as kindergarten students.</p>		
<p>D. Provide information and activities to help schools understand children and families.</p>		
<p>E. Demonstrate an understanding of the diversity of family structures, styles, and cultural traditions.</p>		



## FAMILY-SCHOOL-COMMUNITY PARTNERSHIPS

### 2. Communication

Quality kindergarten programs will effectively communicate with families about school programs and student progress through school to home and home to school communications.

<p>School</p> <p><i>To support children, families, and communities the school will:</i></p>	<p>Family</p> <p><i>To support children the family can:</i></p>	<p>Community</p> <p><i>To support children, families, and schools the community can:</i></p>
<p>A. Communicate with families about school programs, assessments, children's progress, courses, activities, programs, etc.</p>	<ul style="list-style-type: none"> <li>Engage in communications with school about programs, assessments, children's progress, courses, activities, programs, etc.</li> <li>Participate in two-way communication through conferences, memos, notices, report cards, news letters, phone calls, and computerized messages.</li> <li>Offer suggestions to improve the design and content of communications between school and home.</li> </ul>	<ul style="list-style-type: none"> <li>Provide a variety of resources to enhance two-way communication between home/school/communities.</li> <li>Participate in frequent two-way communication with families and schools.</li> </ul>
<p>B. Promote two-way communication through conferences, memos, notices, report cards, news letters, phone calls, and computerized messages.</p>		
<p>C. Provide print and non-print communications that are clear and understandable to all families.</p>		
<p>D. Obtain ideas from families to improve the design and content of communications.</p>		
<p>E. Provide two-way channels of communication for questions and interactions.</p>		
<p>F. Create an inviting environment for families to engage in open dialogue.</p>		

## WORKING DRAFT

### FAMILY-SCHOOL-COMMUNITY PARTNERSHIPS

#### 3. Volunteering

Quality kindergarten programs will improve recruitment, training, work, and schedules to involve families as volunteers and audiences at the school or in other locations to support students and school programs.

<p style="text-align: center;"><b>School</b></p> <p><i>To support children, families, and communities the school will:</i></p>	<p style="text-align: center;"><b>Family</b></p> <p><i>To support children the family can:</i></p>	<p style="text-align: center;"><b>Community</b></p> <p><i>To support children, families, and schools the community can:</i></p>
<p>A. Expand recruitment, training, work, and schedules to involve families as volunteers and audiences at the school or in other locations (community, school, home) to support students and school programs.</p>	<ul style="list-style-type: none"> <li>▪ Assist administrators, teachers, parents, and students as aides, chaperones, lecturers, and tutors when possible.</li> <li>▪ Assist with school programs.</li> <li>▪ Attend assemblies, award presentations, celebrations, performances, sports events, and other events.</li> <li>▪ Support school goals and children's learning.</li> </ul>	<ul style="list-style-type: none"> <li>▪ Offer a variety of resources to assist schools and families in their role of encouraging parents to serve as volunteers.</li> </ul>

# WORKING DRAFT

## FAMILY-SCHOOL-COMMUNITY PARTNERSHIPS

### 4. Learning at Home

Quality kindergarten programs will involve families with their children in at-home interactive learning activities that support kindergarten skills and concepts.

<p><b>School</b> <i>To support children, families, and communities the school will:</i></p>	<p><b>Family</b> <i>To support children the family can:</i></p>	<p><b>Community</b> <i>To support children, families, and schools the community can:</i></p>
<p>A. Involve families with their children in learning activities at home, including interactive learning activities and other curricular related activities and decisions.</p>	<ul style="list-style-type: none"> <li>Participate with children in interactive learning activities at home to support kindergarten skills and concepts.</li> </ul>	<ul style="list-style-type: none"> <li>Provide a variety of resources to support schools and families in their role as guides and co-learners of student learning at home.</li> </ul>
<p>B. Provide information concerning kindergarten skills and concepts.</p>		
<p>C. Stress that help at home is to support, encourage, and guide children's acquisition of kindergarten skills and concepts.</p>		
<p>D. Design and implement interactive learning activities for which students take responsibility to discuss important class work and ideas with their families.</p>		
<p>E. Create interactive activities that students share and discuss with others at home.</p>		
<p>F. Provide information concerning other skills and talents.</p>		



# WORKING DRAFT

## FAMILY-SCHOOL-COMMUNITY PARTNERSHIPS

### 5. Decision Making

Quality kindergarten programs will include families as participants in school decisions, governance, and advocacy through PTA/PTO, school councils, committees, action teams, and other parent organizations.

<p><b>School</b></p> <p><i>To support children, families, and communities the school will:</i></p>	<p><b>Family</b></p> <p><i>To support children the family can:</i></p>	<p><b>Community</b></p> <p><i>To support children, families, and schools the community can:</i></p>
<p>A. Encourage involvement through PTA/PTO membership, participation, leadership, representation, advisory councils, school improvement teams, Title I councils, school-site management teams, and other independent school advisory groups.</p>	<ul style="list-style-type: none"> <li>▪ Become involved through PTA/PTO membership, participation, leadership, representation, advisory councils, school improvement teams, Title I councils, school-site management teams, and other independent school advisory groups.</li> <li>▪ Participate in leadership training.</li> <li>▪ View decision making as a shared process of taking action for the successful achievement of common goals for school improvement and student success.</li> </ul>	<ul style="list-style-type: none"> <li>▪ Provide a variety of resources for families and schools to both encourage and participate as shared decision makers.</li> </ul>
<p>B. Include parent leaders from all ethnic, racial, socio-economic, and other groups in the schools to serve as decision makers.</p>		
<p>C. Offer training for parent leaders to develop leadership skills.</p>		
<p>D. Understand decision making is a shared process of taking action for the successful achievement of common goals for school improvement and student success.</p>		

## FAMILY-SCHOOL-COMMUNITY PARTNERSHIPS

### 6. Collaborating with the Community

Quality kindergarten programs will coordinate community resources and services for students, families, and the school with businesses, agencies, and other groups, and provide services to the community. Special attention will be given to facilitate successful transitions from one setting to another.

<p><b>School</b></p> <p><i>To support children, families, and communities the school will:</i></p>	<p><b>Family</b></p> <p><i>To support children the family can:</i></p>	<p><b>Community</b></p> <p><i>To support children, families, and schools the community can:</i></p>
<p>A. Contribute to the community through service learning and special projects aimed at sharing talents and solving local problems.</p>	<ul style="list-style-type: none"> <li>Contribute to the community through service learning and special projects aimed at sharing talents and solving local problems.</li> <li>Use knowledge of local resources to increase personal skills and talents or to obtain needed services for family.</li> </ul>	<ul style="list-style-type: none"> <li>Contribute to students, families, and schools through partnerships involving businesses, community agencies, cultural groups, health services, recreation, and other groups and programs.</li> <li>Work to solve problems of turf, responsibilities, goals, and funds.</li> <li>Provide multiple avenues for informing families and students about community programs and services, and ensure equal opportunities for services and participation.</li> </ul>
<p>B. Work to solve problems of turf, responsibilities, goals, and funds.</p>		
<p>C. Inform all families and learners about community programs and services, and ensure equal opportunities for services and participation.</p>		
<p>D. Use community resources for improving curriculum and instruction.</p>		
<p>E. Employ strategies that enable students to learn about and contribute to the community.</p>		
<p>F. Facilitate transitions between preschool and kindergarten and between kindergarten and grade one.</p>		